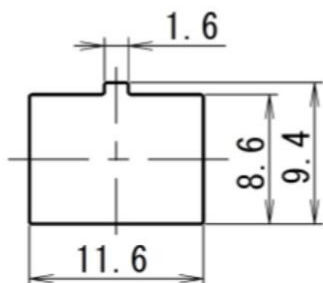
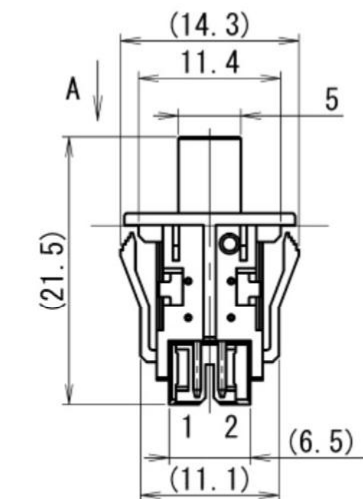
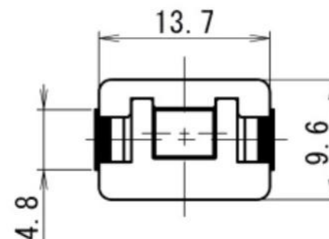




CAD FILE:

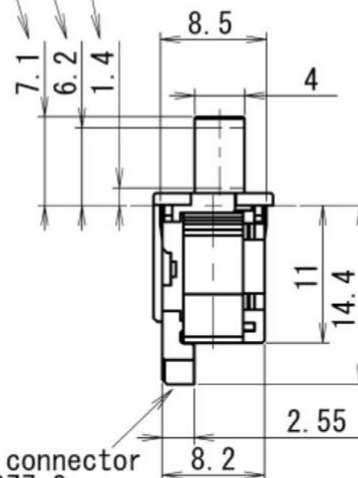
SCHEMATIC

t=0.8~1.6mm
(See A angle)

Total travel position

Operating position

Free position

Applicable connector
:TYCO 173977-2

1. Typical Specifications
2. Item
3. Specification
4. Ratings (max / min.)
5. 10mA5V DC/ 0.05mA 3V DC (Resistive load)
6. Contact resistance
7. 100 milliohm max.
8. Insulation resistance
9. 100 meg ohm min. 100V DC
10. Withstanding voltage
11. 100V AC for 1min.
12. Operating life with load
13. Operating force 1N max
14. 100,000 cycles

注“*”表示关键尺寸 (8个)

8					TOLERANCE				
7					UNLESS SPECIFIED				
6	TERMINAL	BRASS STRIP	1	Ag PLATED	WITHIN 1.5mm : ±0.1mm	A	2020-08-31	初 版	李 静
5	CASE	PA66	1	BLACK	OVER 1.5mm : ±0.2mm	ISSUE	DATE	DESCRIPTORS OF REVISION	APPD.
4	SPRING	SUS	1	NATURAL	TITLE : PUSH SWITCH			UNIT : mm	DRWG NO.: XB-SW1G-550
3	CONTACT	PBS STRIP	1	Ag CLAD	MODEL: XB-SW1G-550			SCALE: 5:1	DWN. 高 广 球 2021-08-6
2	KNOB	PA66	1	YELLOW	XEB 东莞市溪榜电子有限公司 DONG GUAN XI BANG ELECTRONICS CO., LTD.			CHK'D 李 凌 锋	2021-08-6
1	COVER	PA66	1	BLACK				APPD. 李 静	2021-08-6
NO.	PARTS	MATERIALS	QTY	FINISH					