

# ROHS

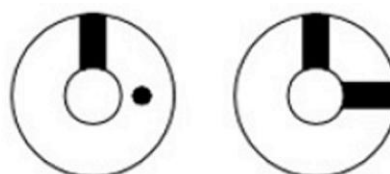
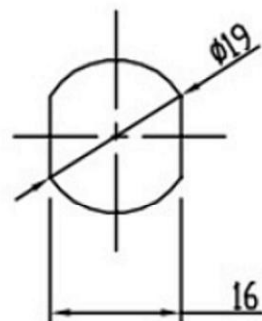
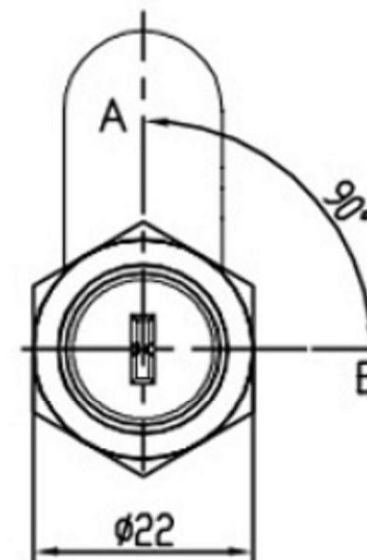
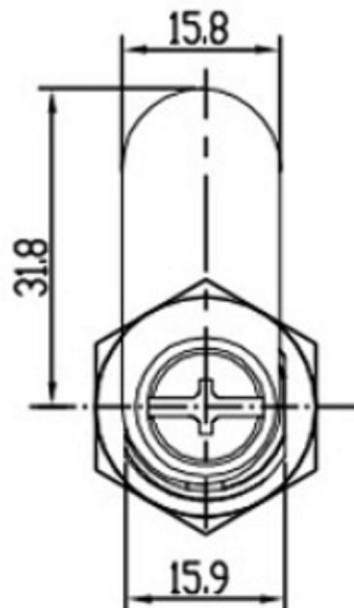
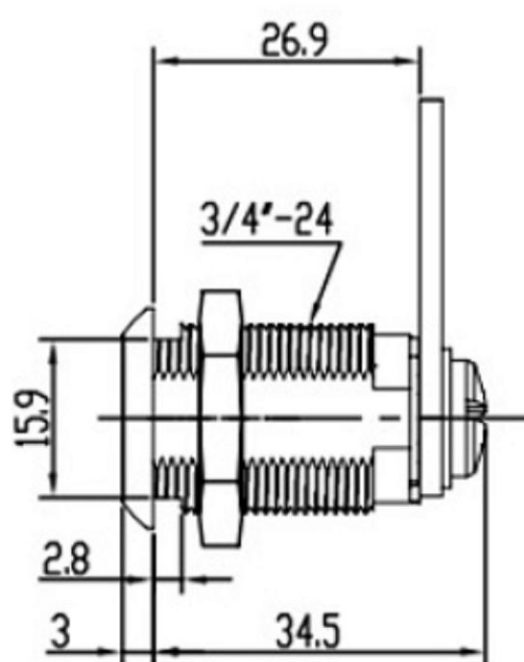


Fig.1

Fig.2

■ -INDICATES KEY-PULL

● -INDICATES NO KEY-PULL

## Recommended hole size

Mechanical key switch

Zinc alloy die cast housing and cylinder,  
with dust shutter mechanism.

Bright nickel plated standard.

8 disc tumbler mechanism.

Brass internal wave keys, nickel plated, with plastic cover.

Key may be withdrawn in one or both positions.

Various cam configurations and rotations available.

Cam is affixed by

screw.

Hex nut or speed clip mounted.

All keyed alike or one combination per 100 pcs standard.

5,000 combinations available.

The material contained in this drawing is the property of XiBang. Any use other than that specifically authorized by XiBang is prohibited. The above drawing is subjected to change for improvement without prior notice.



东莞市溪榜电子有限公司  
DONG GUAN XI BANG ELECTRONICS CO., LTD

TITLE : XB KEY SWITCH ELECTRONIC LOCK

MODEL : XB-C-620-1



TOLERANCE  
<=1.5mm±0.1  
> 1.5mm±0.2  
>=10mm±0.3

ANGLE  
±2°

UNIT : MM	DWN.	ZENQ. CHEN	DATE	
SCALE : 3 : 1	CHK'D	PENG. GAO	DATE	
VBRSION	01	APPD.	FEI. LONG. HE	DATE

7	SPRING	STEEL WIRE	1	NATURE
6	STEEL BALL	STEEL	1	NATURE
5	BOARD	PHENOLIC RESIN	1	NATURE
4	CONTACT CLIP	PBS STRIP	2	Ag PLATED
3	FRAME	IRON STRIP	1	Ni PLATED
2	TERMINAL	BRASS STRIP	8	Ag PLATED
1	KNOB	POM	1	BLACK
NO.	PART NAME	MATERIAL	QTY.	FINISHING